

October, A.D., Nineteen Hundred Eighty Six

-A Part Of Cypress Point, A Planned Unit Development-

-Boca Trace-

-Lying In Section Thirty Two, Township Forty Seven South, Range Forty Two East-

Being A Replat Of Portions Of Tracts Fifteen, Sixteen, Seventeen, Eighteen And Twenty Eight, Block Eighty Three, Palm Beach Farms Company's Plat Number Three, Plat Book Two, Pages Forth Five Through Fifty Four, Inclusive, Public Records, Palm Beach County, Florida.

3247142

SUBDIVISION Boca Trace
 BOOK 57 PAGE 34
 FLOOD ZONE A01 FLOOD MAP # 240B
 QUAD # 54 ZONING
 SE ZIP CODE 33433
 PUD NAME
 TAZ 790

Sheet Two Of Four

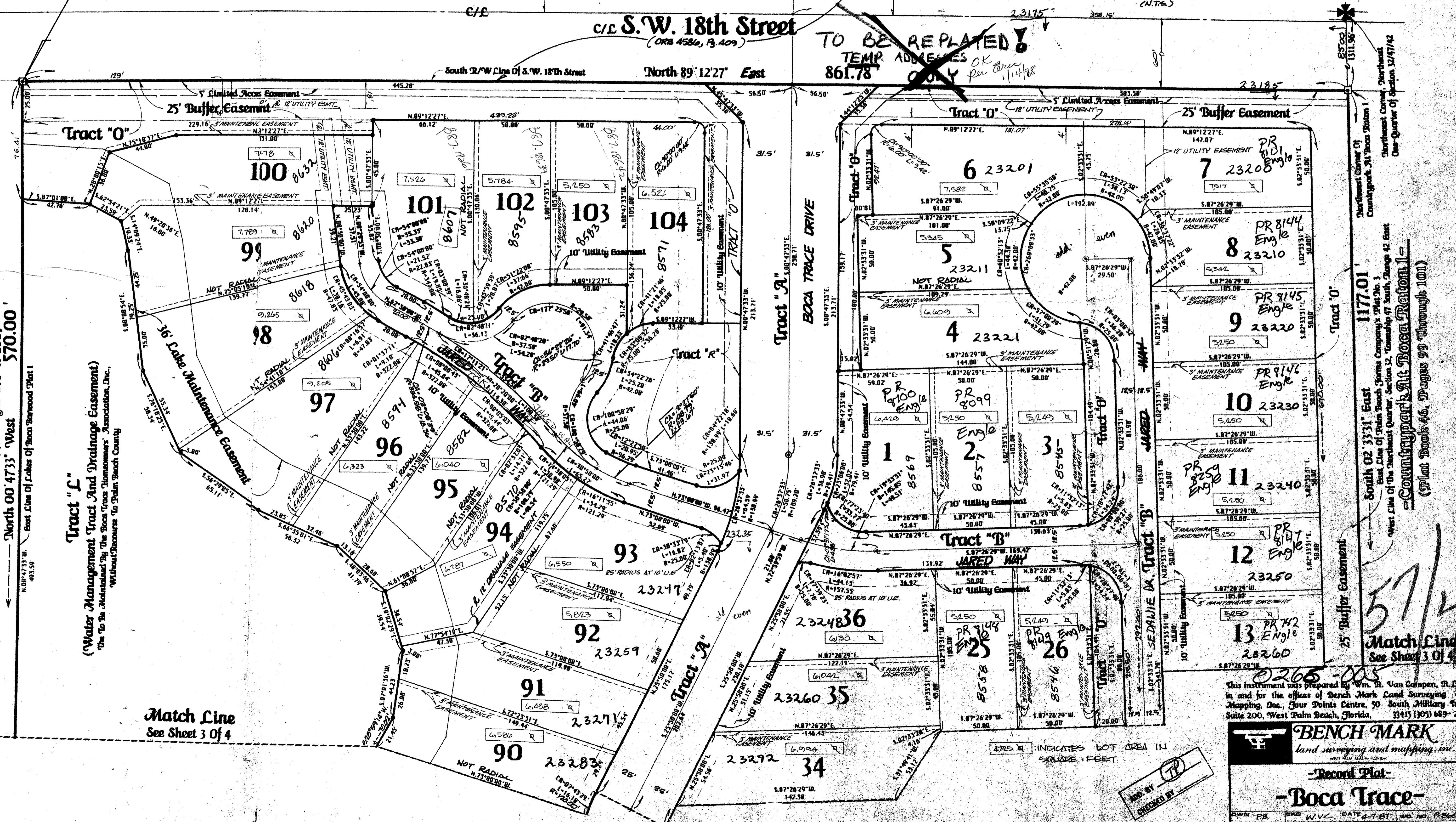
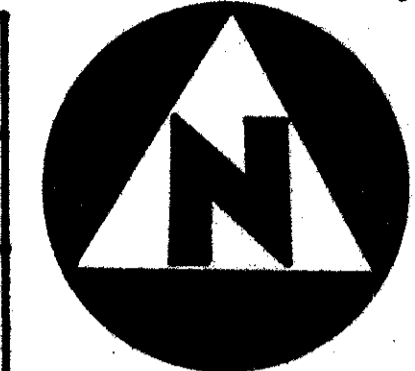
State of Florida)
 County of Palm Beach)
 This Plat was filed for record
 at _____ this _____ day of
 _____, A.D., 1986, and
 duly recorded in Plat Book
 _____ on Page _____ thru _____
 John B. Dunkle,
 Clerk of the Circuit Court.
 By _____
 Deputy Clerk

P.O.B

TRENDS AT BOCA RATON UNIT I
(P.B. 51, P. 131-134)



SHEET 2
 SHEET 3
 SHEET 4



LAKES OF BOCA BARWOOD, PLAT 1 -
 (Plat Book 44, Pages 179 & 180)
 North 00°47'33" West
 570.00'

Tract "L"
 (Water Management Tract And Drainage Easement)
 The To Be Maintained By The Boca Trace Homeowners' Association, Inc.,
 Without Recourse To Palm Beach County

Match Line
 See Sheet 3 of 4

Tract "O"
 117-01
 South 02°33'31" East
 East Line of Palm Beach Farms Company's Plat No. 3
 West Line of the Northeast Quarter, Section 32, Township 47 South, Range 42 East
 -Country Park At Boca Raton I-
 (Plat Book 46, Pages 99 through 101)

This instrument was prepared by Wm. B. Van Campen, R.C.S.,
 in and for the offices of Bench Mark Land Surveying and
 Mapping, Inc., Four Points Centre, 50 South Military Trail,
 Suite 200, West Palm Beach, Florida, 33415 (305) 689-2111

BENCH MARK
 land surveying and mapping, inc.
 -Record Plat-
-Boca Trace-

OWN: PB CKD: WVC DATE: 4-7-87 NO. NO. PLOTTED
 SCALE: 1"=30' SIZE: 24" x 36" SHEET: 2 OF 4